

Welcome Letter

Name or Group Name
Address Line 1
City, State Zip

Dear (Insert Name or Group),

Sierra Nevada Journeys is excited to host your group at Grizzly Creek Ranch Campus. We look forward to working with you to make your event or program a success.

This packet includes information that will help you prepare for your stay. The following information is included:

- Grizzly Creek Ranch Brochure
- Pre-arrival and Arrival Information
- Frequently Asked Questions
- Packing List
- Directions to Grizzly Creek Ranch
- Grizzly Creek Ranch Campus Map
- Menu Options
- Facilities Floor Plans
- Liability Waiver

Please review the materials and let me know if you have any questions. I am happy to provide any additional information you may need. Feel free to contact me at 775-223-9973 or by email at johnny@sierranevadajourneys.org.

We look forward to working with you at Grizzly Creek Ranch Campus!

Johnny McLaughlin
Vice President
Grizzly Creek Ranch Campus



Johnny McLaughlin
VP of Grizzly Creek Ranch Campus
775-355-1688
johnny@sierranevadajourneys.org
www.sierranevadajourneys.org



Grizzly Creek Ranch is located in Portola, CA. The site is situated on 1,500 acres of pristine Yellow Pine forest and is located just 45 minutes from Reno and Lake Tahoe and 2.5 hours from Sacramento.



**Sierra Nevada
JOURNEYS**

Grizzly Creek Ranch

The Perfect Fit For Your Program

Grizzly Creek Ranch

Grizzly Creek Ranch was founded by Sierra Health Foundation in 2003 to provide educational and leadership opportunities for kids with medical, physical, developmental and behavioral challenges. In 2010, Sierra Health Foundation partnered with Sierra Nevada Journeys to launch a state-of-the-art experiential education initiative at Grizzly Creek Ranch. This initiative improves health and well-being for youth in Northern California and Northern Nevada through innovative outdoor education.

Johnny McLaughlin

VP of Grizzly Creek Ranch

Phone: 775-223-9973

johnny@sierranevadajourneys.org

www.sierranevadajourneys.org



Sierra Nevada Journeys
1301 Cordone Avenue #200
Reno, NV 89502



SIERRA HEALTH FOUNDATION
An Endowment for Northern California

Sierra Health Foundation
1321 Garden Highway
Sacramento, CA 95833



Grizzly Creek Ranch
5900 Grizzly Road
Portola, CA 96122



Serving Multiple Audiences

At Grizzly Creek Ranch Sierra Nevada Journeys serves diverse audiences and hosts numerous programs including: youth, teens, populations with special needs, children at-risk for a variety of social and economic reasons, specialty summer camps, church retreats, community groups, conferences and reunions. Grizzly Creek Ranch is a modern and easily accessible facility that operates year round.



"There was a clear progression of individual and group learning, teamwork, strategy and applied leadership which fit perfectly with our program goals."

–Sacramento Youth Leadership Program

Customized Programming

Sierra Nevada Journeys helps you accomplish your program goals and meet the needs of your participants through highly customizable programming. You can choose from a number of engaging outdoor experiences including:

- Leadership Development
- Teambuilding
- Archery
- Kayaking
- Ropes Course (High and Low)
- Nature Trails & Hiking
- Swimming
- Fishing
- Science Programs
- Night Hikes
- Recreation Activities
- Campfire Programs

"The staff was extremely accommodating – easy to work with and offered excellent programs – if you want the most out of a camp experience, use the Sierra Nevada Journeys team." –Rotary Youth Leadership Awards

Breathtaking Location

The Ranch is surrounded by magnificent vistas and is situated on 1,500 acres of pristine Yellow Pine forest on the eastern slope of the Sierra Nevada Mountains. Located just 45 minutes from Reno and Lake Tahoe, and 2.5 hours from Sacramento, this is the perfect venue for whatever your group needs may be.



Attention to Safety

Your safety is our number one priority. All staff are CPR/First Aid certified and have passed federal and state background checks. A health center is centrally located on site, and we are five minutes away from the local hospital.

"All of our campers had an amazing experience. Your instructors made our students come alive, and were patient and remained in control even with the youth that had severe ADD." –REACH Group

Exceptional Facilities

Our fully ADA accessible Ranch offers modern facilities that are clean and comfortable. The facilities have air conditioning & heating and include a spacious dining hall, lawn area for outdoor play, patio area with a fire pit, an amphitheater, various Activity Centers for programming, basketball courts, multiple campfire sites, mountain ridges to hike to, and a pond for fishing and kayaking.



Comfortable Lodging & Fantastic Food

Each cabin at the 160-bed Ranch accommodates at least 10 participants and has its own restroom. Shower facilities and a washer/dryer are easily accessible. Sierra Nevada Journeys offers delicious and nutritious menu options. We work diligently to meet the dietary needs and preferences of your group.

"It was the best camp experience in terms of facilities, food, staff, and space." –Camp Sunburst

Affordable Pricing

Sierra Nevada Journeys works with you and your group to meet your budgetary needs. Please see our 2011–2012 pricing below. (Cost includes lodging, all meals, and programming)

- 2 Days/1 Night –\$71/Participant
- 3 Days/2 Nights –\$142/Participant
- 4 Days/3 Nights –\$205/Participant
- 5 Days/4 Nights –\$272/Participant
- 6 Days/5 Nights –\$318/Participant



For more information about Grizzly Creek Ranch or to schedule a program, please contact VP of Grizzly Creek Ranch, Johnny McLaughlin, at 775-223-9973 or email johnny@sierranevadajourneys.org

Packing List

Please share the following suggested packing list with your participants:

- Sleeping bag / Bed Linens
- Pillow
- Towels – bath and swimming
- Toiletries – soap/body wash, shampoo, toothpaste, toothbrush, comb/hairbrush, ChapStick, etc.
- Closed-toed tennis shoes for hiking & ropes course
- Swimsuit(pool is only open during summer months)
- Water bottle
- Shower Flip Flops
- Casual dress(Please pack enough clothing items for the duration of your trip. In the cooler months, layers are recommended.)
- Sunscreen
- Hat and/or sunglasses
- Bug spray(no aerosol bottles please)
- Backpack (to carry extra layers, water bottle, camera, etc.)
- Rain Jacket
- Sweatshirt, Jacket, Coat (even in summer months it is cooler in the evenings)
- Flashlight
- Camera

Weather in the Region:

Grizzly Creek Ranch Campus is located on the eastern slope of the Sierra Nevada Mountains and the weather varies depending upon the season. On average July is the warmest month and December is the coldest month. Please note the average temperatures and pack accordingly.

Temperatures (Portola Weather station, 0.73 miles from Portola)

Month	Jan	Feb	Mar	Apr	May	Jun	Jul	Aug	Sep	Oct	Nov	Dec
Max °F	40.5	44.5	49.5	56.5	65.7	75.6	84.4	83.6	76.4	65.3	49.7	41.6
Mean °F	29.2	32.7	37.6	42.6	49.7	57.2	63.1	61.9	55.8	46.9	36.2	29.9
Min °F	17.8	20.9	25.6	28.6	33.6	38.7	41.8	40.2	35.2	28.5	22.7	18.2



Johnny McLaughlin
 VP of Grizzly Creek Ranch Campus
 775-355-1688
johnny@sierranevadajourneys.org
www.sierranevadajourneys.org



Frequently Asked Questions

Q. Is the facility ADA accessible?

A. Yes, Grizzly Creek Ranch Campus is a fully ADA accessible facility including the swimming pool which has a wheel chair ramp.

Q. Is it possible to view the facility prior to use?

A. Yes, please contact the Campus VP Johnny McLaughlin at 775-223-9973 or Johnny@sierranevadajourneys.org to set up a tour.

Q. What are the accommodations at Grizzly Creek Ranch Campus?

A. All of our cabins have in suite restrooms with running water. Each of our cabin villages have nearby shower and laundry facilities. Our Copper Cabins have both in suite restrooms and shower facilities.

Q. Who works at Grizzly Creek Ranch Campus?

A. Our greatest asset at the Campus is our hard working, knowledgeable staff. Each staff member is CPR and First Aid certified. All staff are fingerprinted and undergo an extensive background check by the Department of Justice.

Q. What if someone gets injured or becomes sick during their stay at Grizzly Creek Ranch Campus?

A. We have a health center on-site that can provide first aid for minor injuries. The local Hospital in Portola is only 5 minutes away and EMS can be on-site in fewer than 10 minutes for more serious injuries.

Q. Are bed linens and towels provided?

A. No, your participants are responsible for bring their own sleeping bags or bed linens, towels (swim and shower) and personal toiletries. Linen service is available for an additional charge.

Q. Can I bring snacks to Grizzly Creek Ranch Campus?

A. Grizzly Creek Ranch Campus has a wonderful kitchen staff that can accommodate all of your group's dietary needs. Participants are welcome to bring personal snacks and we will make every effort to store those snacks in the kitchen, but space is limited. No food is allowed in the cabins or activity lodges.

Q. What type of audio/visual capabilities do the facilities have?

A. We have a PA system, projector screen, and easels available for use. It's the program coordinator's responsibility to bring your own LCD projector and other audio visual aids.

Q. Does Grizzly Creek Ranch Campus have internet access?

A. Yes, Grizzly Creek Ranch has WiFi access.

Q. Will my cell phone work at the Campus?

A. Yes, cell phones get reception at Grizzly Creek Ranch Campus.

Q. Is alcohol permitted on Campus?

A. No, alcohol is generally prohibited on Campus. Exceptions may be made to this rule with prior approval for private group events. Event coordinators can contact Johnny McLaughlin at 775-223-9973 or Johnny@sierranevadajourneys.org for more information.

Q. Is smoking permitted on campus?

A. Smoking is only permitted in the designated smoking area (behind Main Lodge).

Q. Are pets allowed on Grizzly Creek Ranch Campus?

A. Pets are not permitted on Campus unless they are a documented service animal. Proof will be required.

Q. Does Campus staff set-up the meeting rooms to accommodate our needs?

A. Yes, staff can complete room set-up as long as instructions are provided prior to arrival.

No firearms or illicit substances are permitted on Campus.



Johnny McLaughlin
VP of Grizzly Creek Ranch Campus
775-355-1688
johnny@sierranevadajourneys.org
www.sierranevadajourneys.org



Procedures & Arrival Info

Please review the following check lists to ensure that you are prepared for your stay at Grizzly Creek Ranch Campus.

Prior to Arrival

- ✓ Arrange all logistical aspects of your program/event with education program staff.
- ✓ Ensure that all participants have completed the liability waiver. Minors require a parent signature.
- ✓ Send the following to Grizzly Creek Ranch Campus:
 - Returned signed contract & deposit
 - Certificate of Liability Insurance (Sierra Nevada Journeys and Sierra Health Foundation must be named as additional insured)
 - Balance of fees 30 days prior to arrival

Upon Arrival

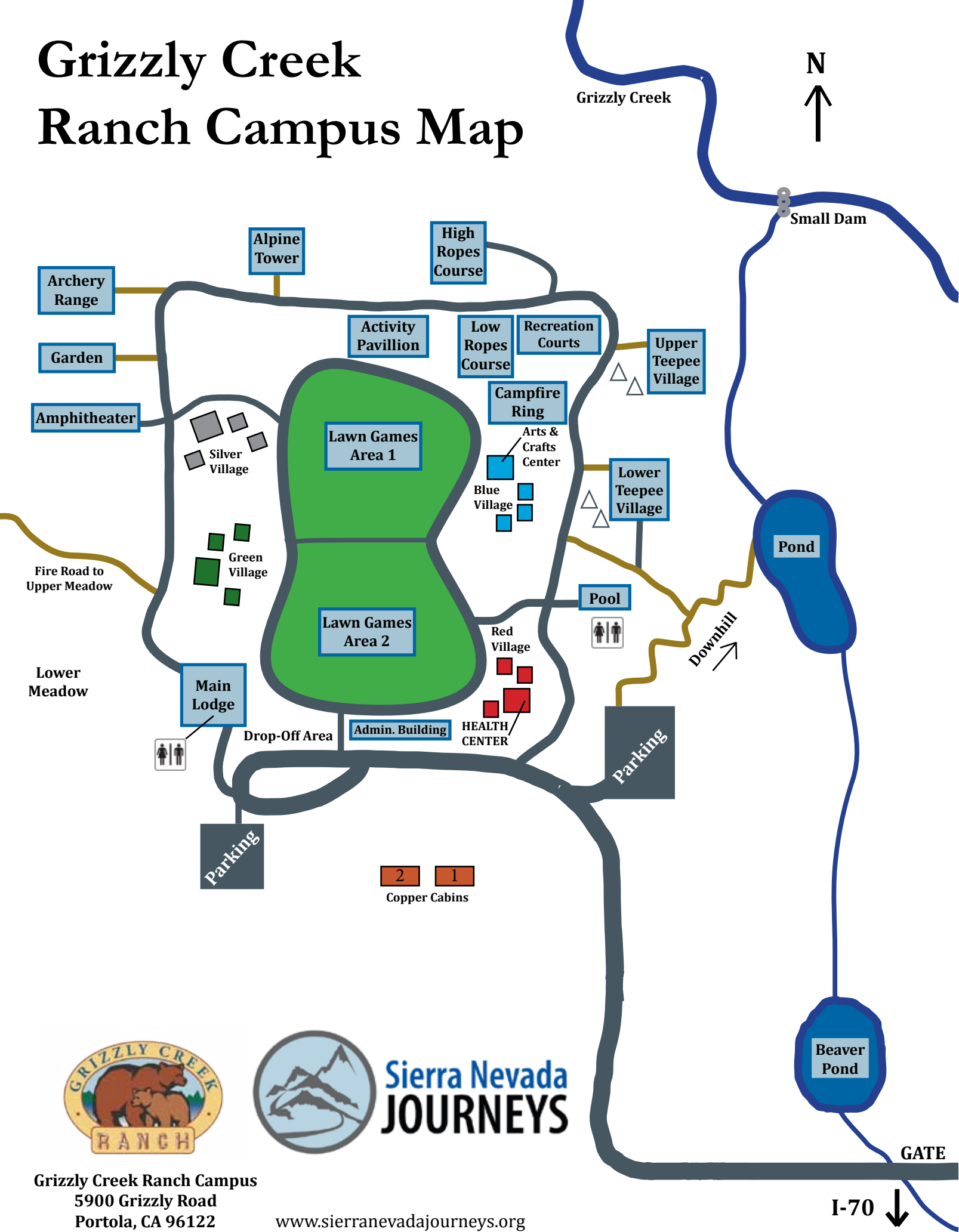
- ✓ Program coordinator to check in at administration building (Ask Johnny who they check in with)
- ✓ Program coordinator to complete campus orientation which covers information about your stay, including what to do in an emergency
- ✓ One key per cabin will be given to a designated group staff person. The Activity Lodge in each village is left unlocked during the group stay.
- ✓ If you have parents dropping off campers, they are welcome to stay for a short time to say good-bye, but should leave the site before the first activity period or meal.



Johnny McLaughlin
VP of Grizzly Creek Ranch Campus
775-355-1688
johnny@sierranevadajourneys.org
www.sierranevadajourneys.org



Grizzly Creek Ranch Campus Map



Grizzly Creek Ranch Campus
 5900 Grizzly Road
 Portola, CA 96122

www.sierranevadajourneys.org

Driving Directions to Grizzly Creek Ranch Campus



From Sacramento

(Estimated travel time: 2.5 hours)

- Take Interstate 80 east toward Truckee, CA, and Reno, NV.
- Just past Truckee, take the Highway 89 exit and go north on Highway 89.
- Follow Highway 89 to Sattley.
- At Sattley turn right (north) onto Highway A23.
- Follow Highway A23 to Highway 70.
- At Highway 70 turn left (west) and follow Highway 70 to Grizzly Road.
- Turn right (north) onto Grizzly Road.
- The entrance to Grizzly Creek Ranch is the first road to the left.

From Chico

(Estimated travel time: 2.5 hours)

- Take Highway 99 south.
- Turn left onto Highway 149.
- Turn left onto Highway 70.
- Just past Portola turn left onto Grizzly Road.
- The entrance to Grizzly Creek Ranch is the first road to the left.

From Reno

(Estimated travel time: 45 minutes)

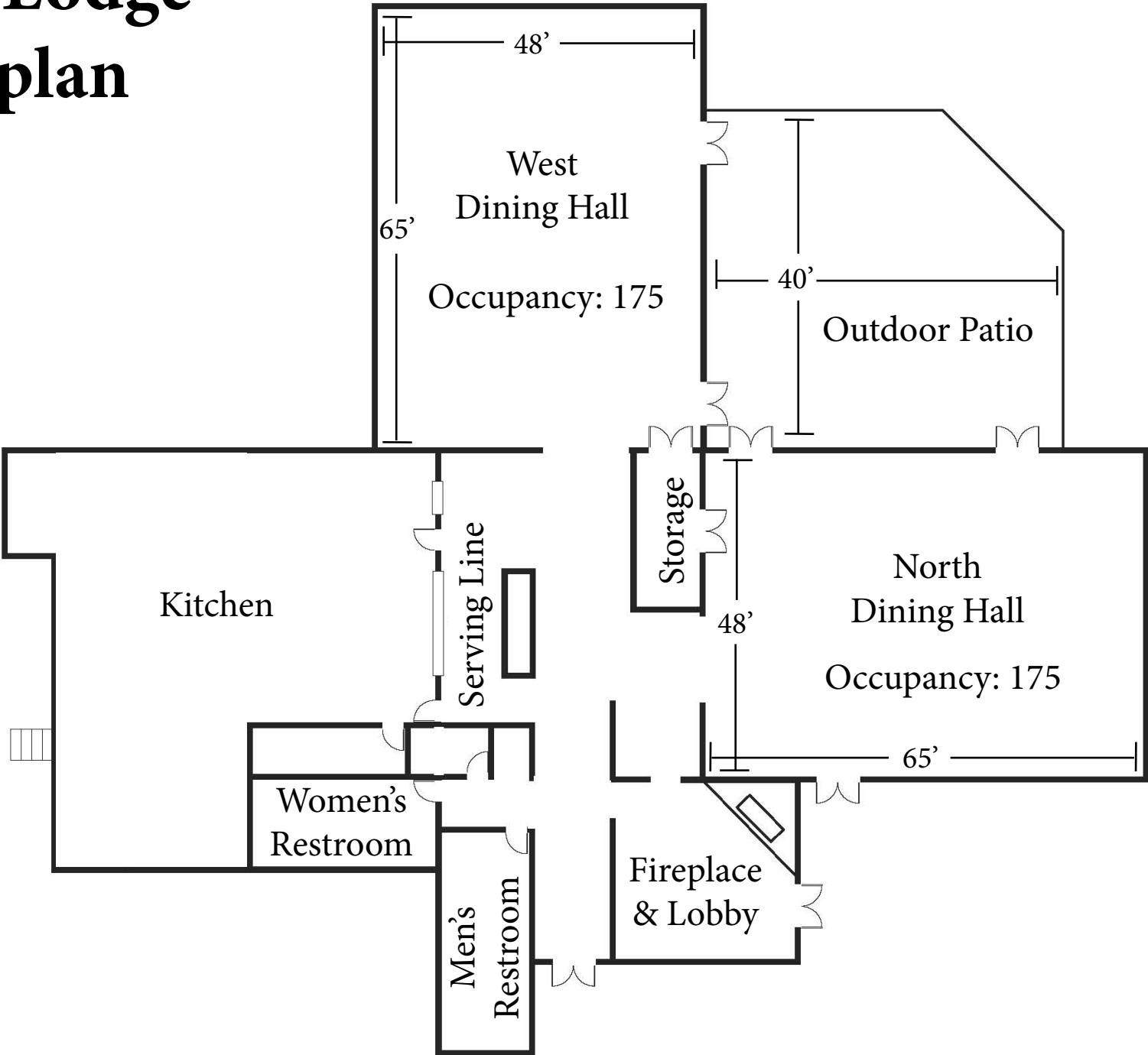
- Take Highway 395 north toward Susanville.
- Take Highway 70 west toward Portola/Quincy.
- Turn right (north) onto Grizzly Road (approx. 21 miles from the intersection of Highway 395 and Highway 70).
- The entrance to Grizzly Creek Ranch is the first road to the left.

From Susanville

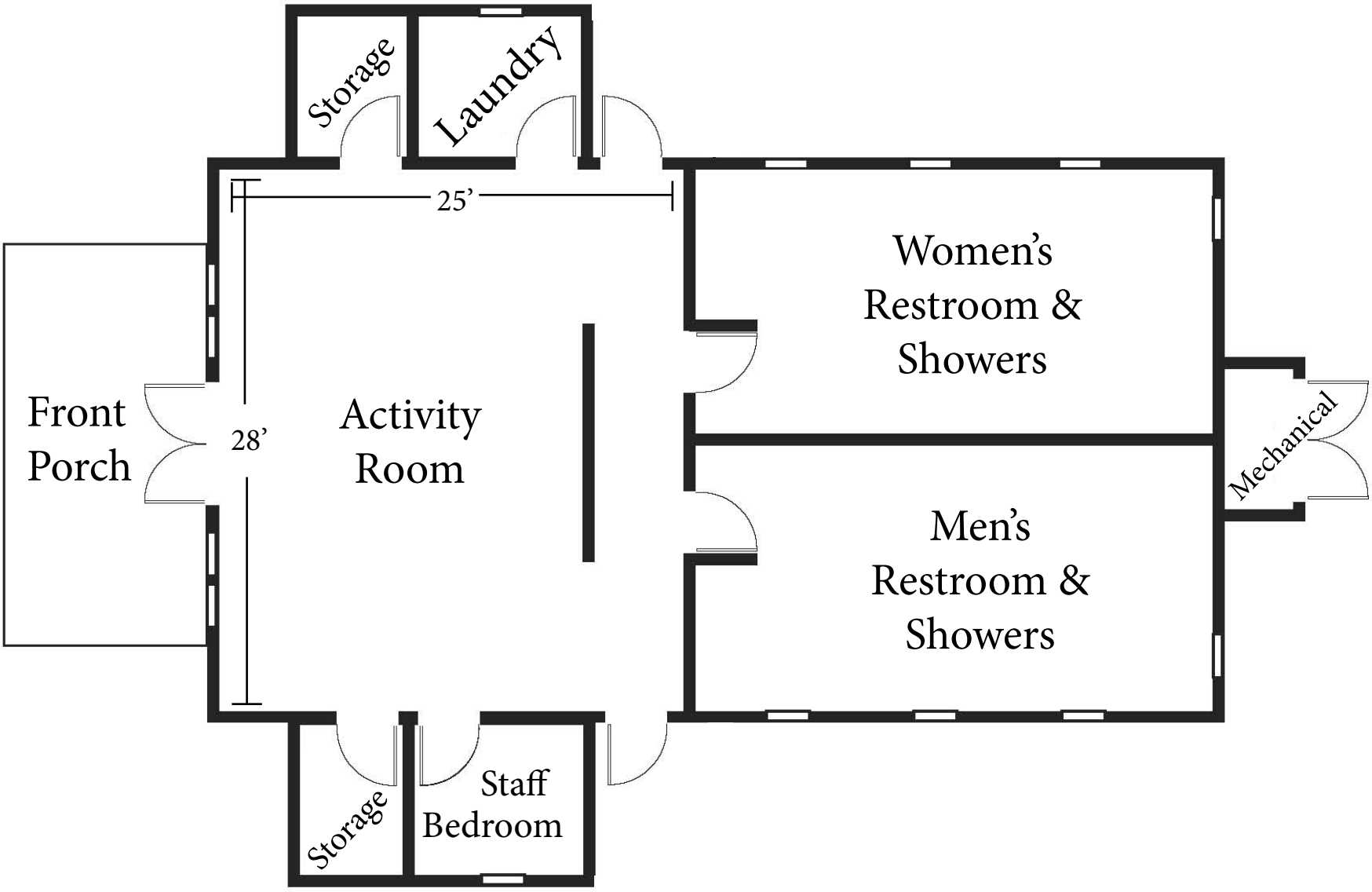
(Estimated travel time: 1.5 hours)

- Take Highway 395 south.
- Turn right onto Highway 70 toward Portola/Quincy.
- Turn right (north) onto Grizzly Road (approx. 21 miles from the intersection of Highway 395 and Highway 70).
- The entrance to Grizzly Creek Ranch is the first road to the left.

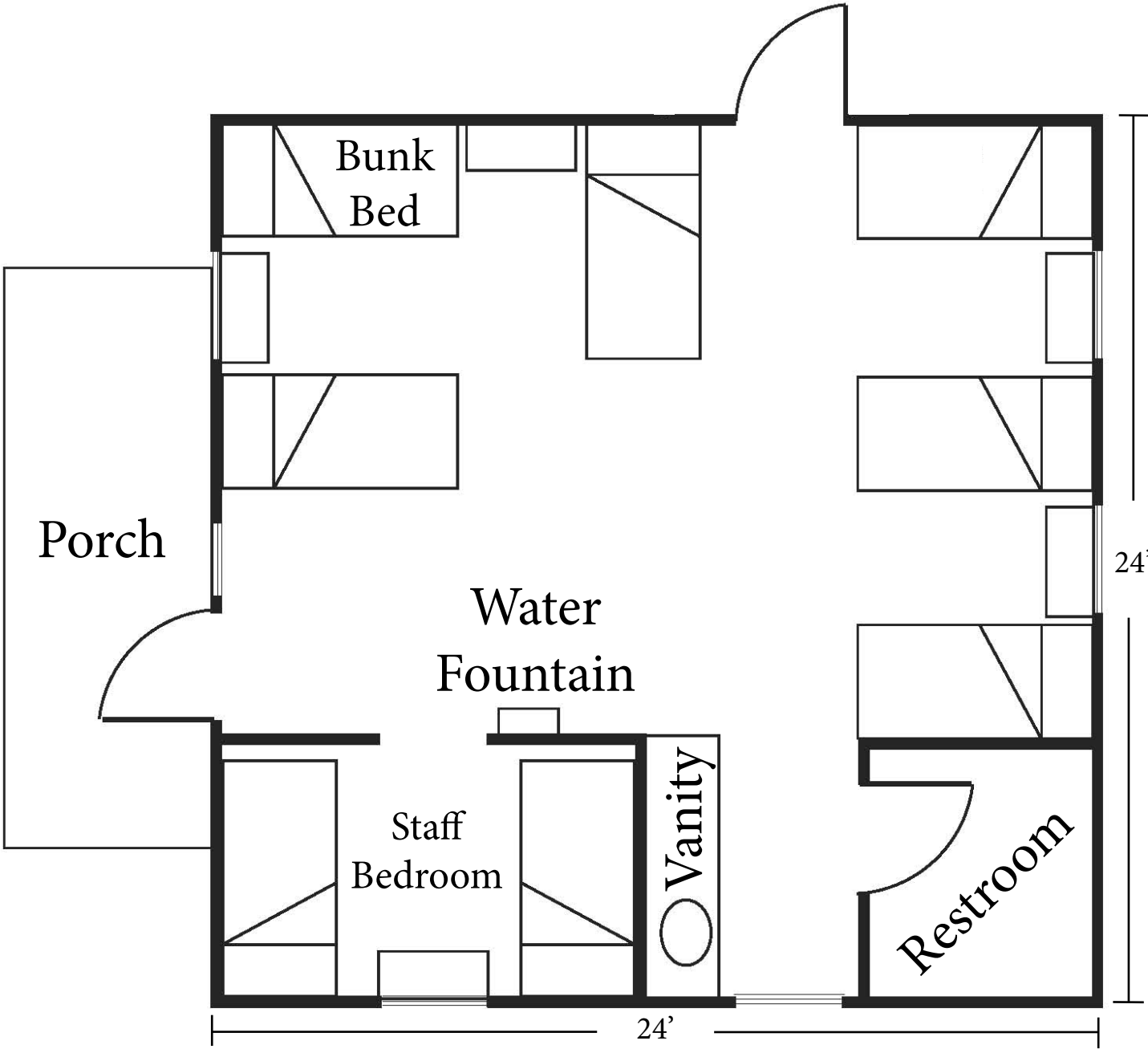
Main Lodge Floorplan



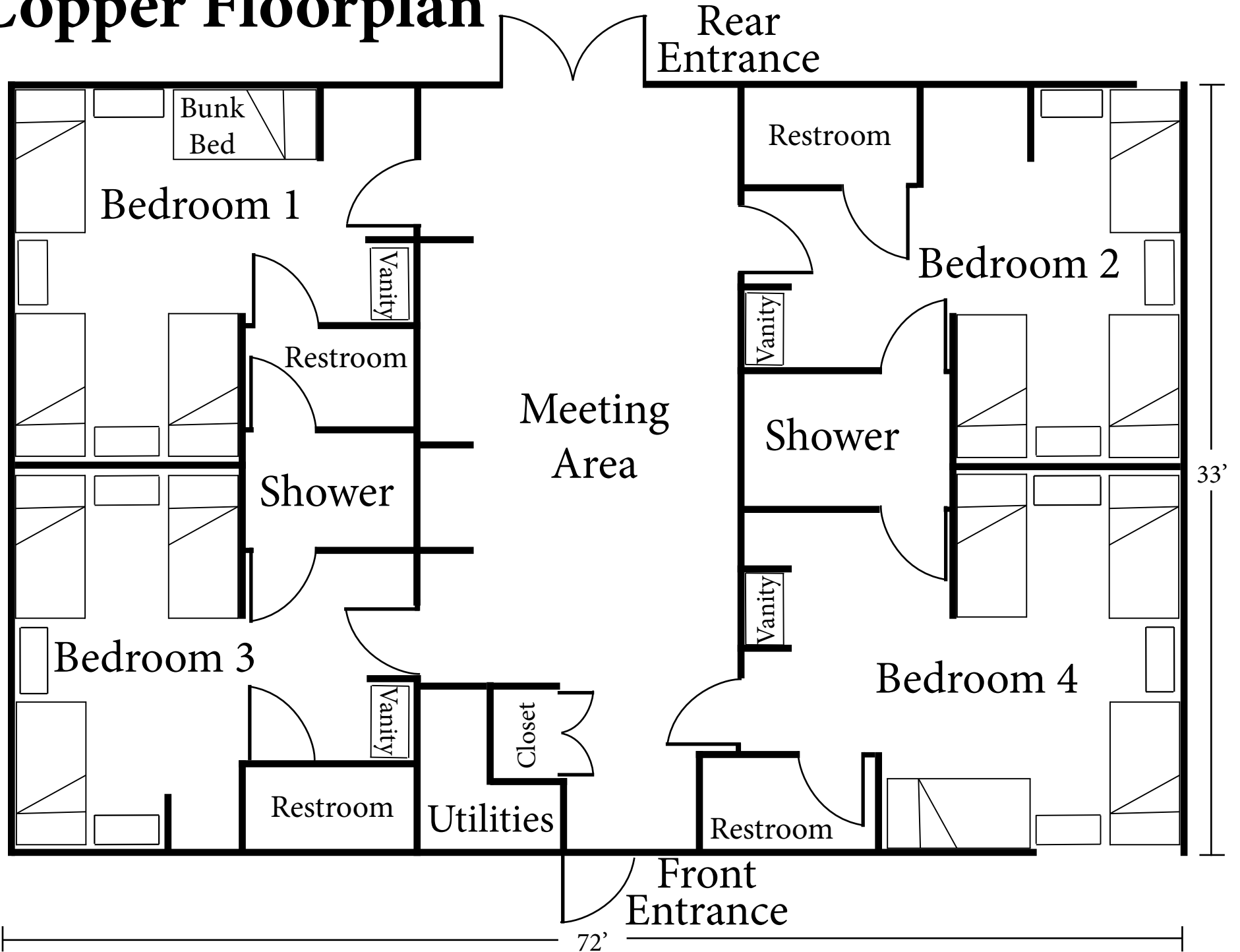
Activity Center Floorplan



Cabin Floorplan



Copper Floorplan



Grizzly Creek Ranch Campus

Food Services

We are proud to serve food made from scratch with healthy ingredients, many from local sources and organically grown. Our menus vary with the needs of your group and accommodate special needs of vegans, diabetics, ethnic or regional tastes. Our chefs have been trained in the best culinary schools and are supported by staff who are professionally trained and love food themselves. We are proud of our record for safety, sanitation and excellent quality.

We want our food to nourish and surprise you, and keep you coming back. A typical menu can be “kid friendly” and may include:



Breakfast

- French toast, German pancakes, scrambled eggs, bacon or sausage.
- We are proud of our many varieties of quiche, frittatas, and soufflés.
- Our fresh oatmeal can be accompanied by fresh creams, pecans, walnuts, cranberries and raisins.

Coffee? We grind locally roasted beans French style or any style for every pot we make, and serve it with fresh dairy, raw sugar, honey and spices. *Tea?* We serve extraordinary teas as well!

Lunch

- We offer a number of different options including artisan salads and breads including caprese with buffalo mozzarellas, fruit salad, green salad with fresh apple, pear and pomegranate, Caesar with fresh garlic and anchovies, and popular Greek and tossed salads.
- Sandwiches and wraps come loaded with vegetables, cheeses and freshly sliced meats.
- We would never forget upscale grilled cheese, hot dogs, hamburgers, fries and home crafted pizzas.



Dinners

- From hot dogs to Beef Wellington, poultry and fish. If you think of it, we can provide it! (Additional costs may be applied)
- Our mashed potatoes are prepared from organic reds and Yukon golds. We serve a variety of rice from risotto to pilaf.
- Fresh vegetables are steamed, sautéed or broiled and seasoned with every herb imaginable.

Desserts

Our Grizzly Ranch Surprise is a phenomenal bread pudding. Hours of slicing fresh strawberries and real whipped cream and homemade shortcake gets shouts from kids and adults. We make our own brownies, cookies, candies, creations in chocolate, marzipan and fresh fruits, sticky rice with fresh mango and homemade ice cream sandwiches.

We are excited to work with you as we plan your menu!