



Welcome to Sierra Nevada Journeys Outdoor Education Camp' Girls in STEM Program.

We are thrilled to inform you that your daughter has been selected to participate in our highly prestigious Girls in STEM Program. This program will provide your daughter with an enriching experience filled with fun and exciting activities. We have created a comprehensive handbook containing valuable information to ensure your family is well-prepared for the upcoming Sierra Nevada Journeys Outdoor Education Camp. This guide is designed to guarantee a seamless experience for your daughter and make her feel at ease throughout the event.

As we approach the event **on April 27th**, you can expect to receive additional emails from us with all the necessary details. These communications will provide further insight into what to expect and any preparations required to ensure your daughter has a smooth and unforgettable experience.

Table of Contents

Page 3 [About Sierra Nevada Journeys Outdoor Education Camp](#)

Page 4 [Map of Camp](#)

Page 5 [Packing List](#)

Page 6 [Daily Schedule & Activities](#)


Page 7 [Important Information](#)

Page 8 [Driving Directions](#)




About Sierra Nevada Journeys Outdoor Education Camp

Our Mission


-  Deliver innovative outdoor, science-based education programs for youth to develop critical thinking skills and inspire natural resource stewardship.

Our Core Values


Equity Forward

-  We prioritize serving youth denied access to high-quality science education and outdoor learning experiences because we believe science and nature are for everyone. We strive to become the equitable and inclusive organization that the youth of our communities deserve.


Committed to Outstanding Quality

-  We strive to improve through rigorous evaluations of our actions. We flexibly embrace change that makes our programs and operations better. We celebrate actions that demonstrate our commitment to excellence.


We Are Accountable

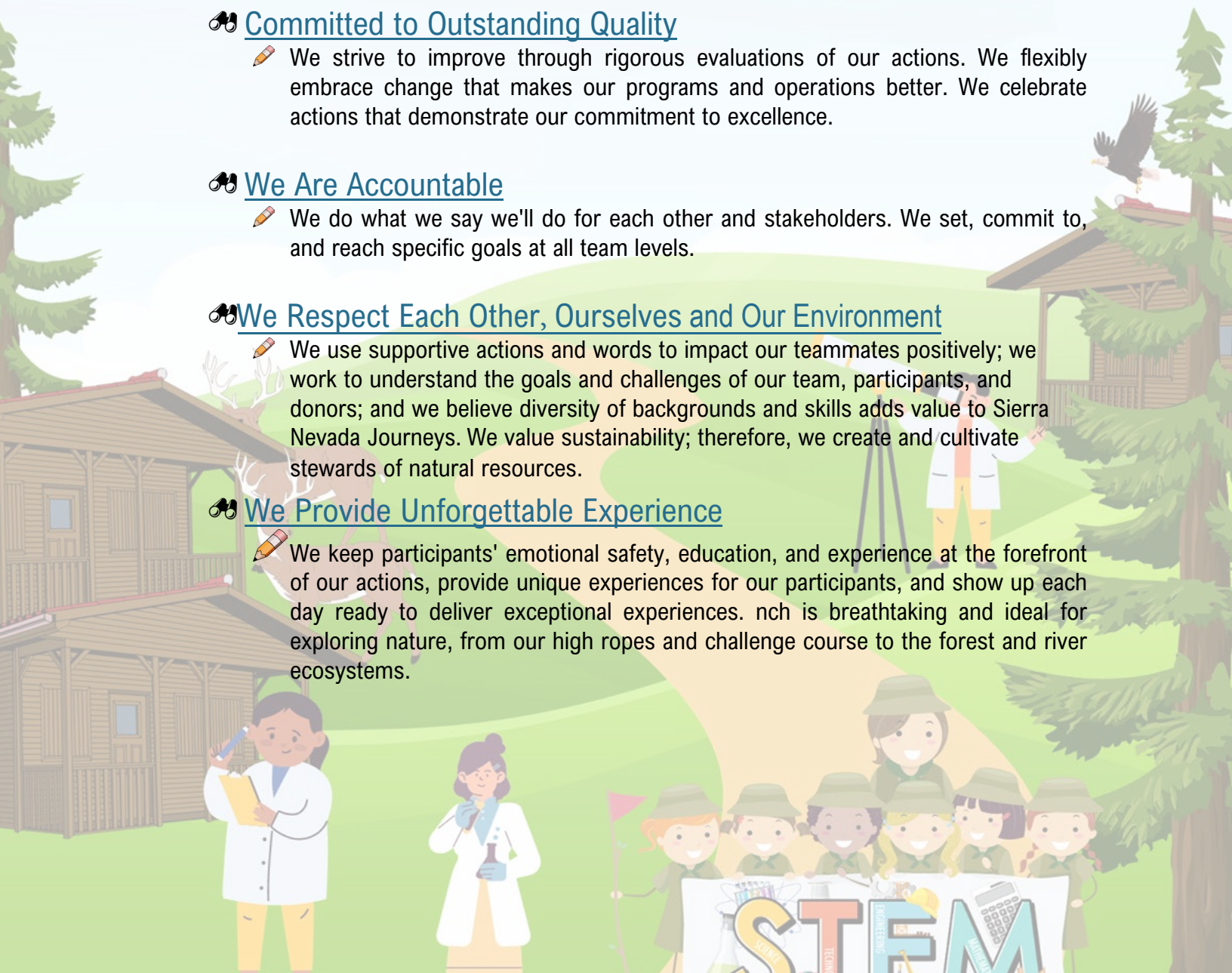
-  We do what we say we'll do for each other and stakeholders. We set, commit to, and reach specific goals at all team levels.

We Respect Each Other, Ourselves and Our Environment

-  We use supportive actions and words to impact our teammates positively; we work to understand the goals and challenges of our team, participants, and donors; and we believe diversity of backgrounds and skills adds value to Sierra Nevada Journeys. We value sustainability; therefore, we create and cultivate stewards of natural resources.

We Provide Unforgettable Experience

-  We keep participants' emotional safety, education, and experience at the forefront of our actions, provide unique experiences for our participants, and show up each day ready to deliver exceptional experiences. nch is breathtaking and ideal for exploring nature, from our high ropes and challenge course to the forest and river ecosystems.



Map of Siera Nevada Journeys



Packing List

Bedding

- 🌲 Laundry bag
- 🌲 Pillow with pillowcase
- 🌲 Sleeping bag
- 🌲 Twin-size fitted sheet

Toiletries

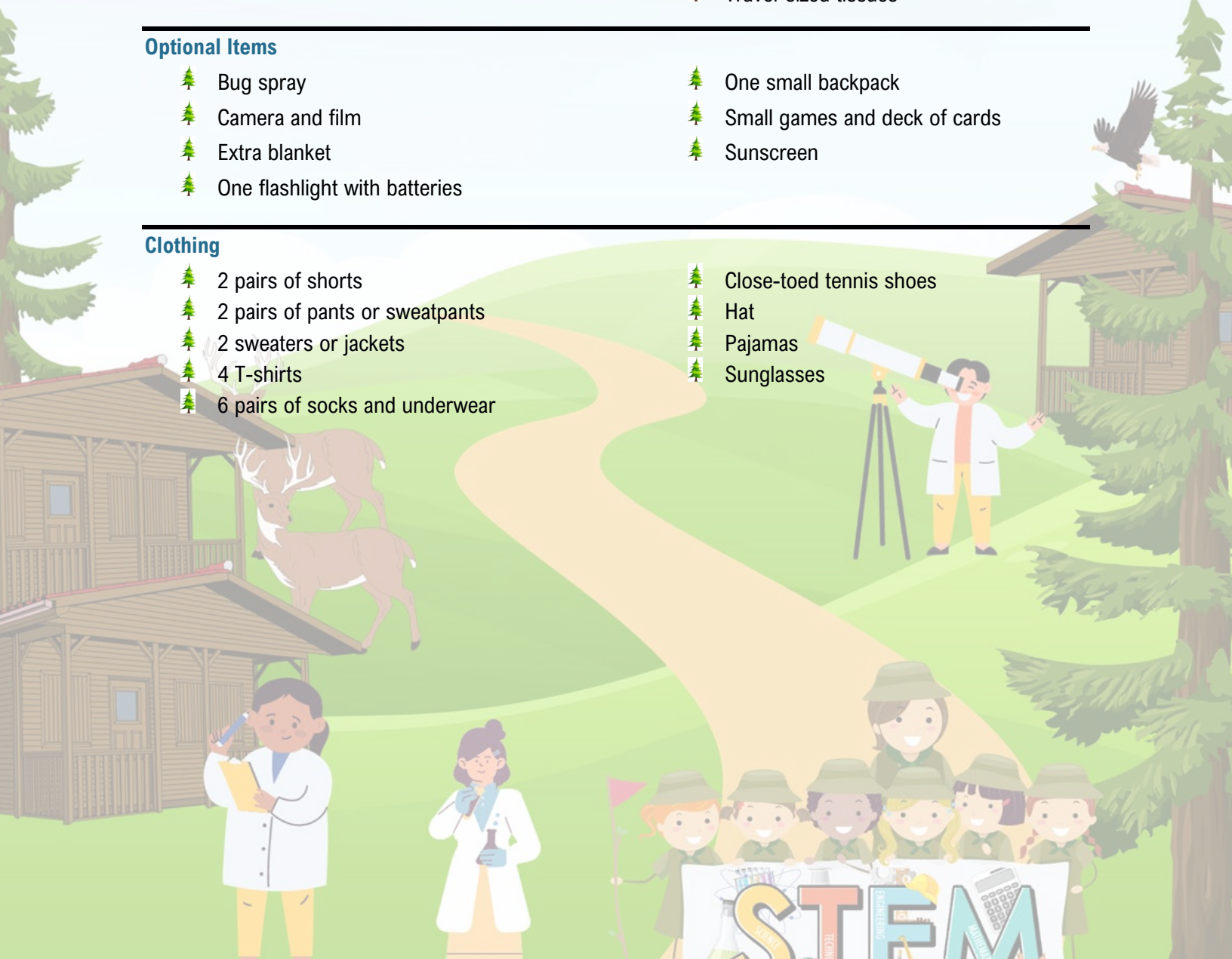
- | | |
|---------------------------------------|-----------------------------|
| 🌲 2 towels | 🌲 Reusable water bottle |
| 🌲 Brush or comb | 🌲 Shampoo and conditioner |
| 🌲 Deodorant | 🌲 Soap and travel container |
| 🌲 Flip Flops or Shower Shoes | 🌲 Sunscreen |
| 🌲 Glasses or contacts (if applicable) | 🌲 Toothbrush and toothpaste |
| 🌲 Lip balm | 🌲 Travel-sized tissues |

Optional Items

- | | |
|---------------------------------|---------------------------------|
| 🌲 Bug spray | 🌲 One small backpack |
| 🌲 Camera and film | 🌲 Small games and deck of cards |
| 🌲 Extra blanket | 🌲 Sunscreen |
| 🌲 One flashlight with batteries | |

Clothing

- | | |
|----------------------------------|---------------------------|
| 🌲 2 pairs of shorts | 🌲 Close-toed tennis shoes |
| 🌲 2 pairs of pants or sweatpants | 🌲 Hat |
| 🌲 2 sweaters or jackets | 🌲 Pajamas |
| 🌲 4 T-shirts | 🌲 Sunglasses |
| 🌲 6 pairs of socks and underwear | |



Daily Schedule and Activities

Saturday

- 9:00 am | Arrival and check-in
- 9:30 am | Meet your cabin leader and get settled

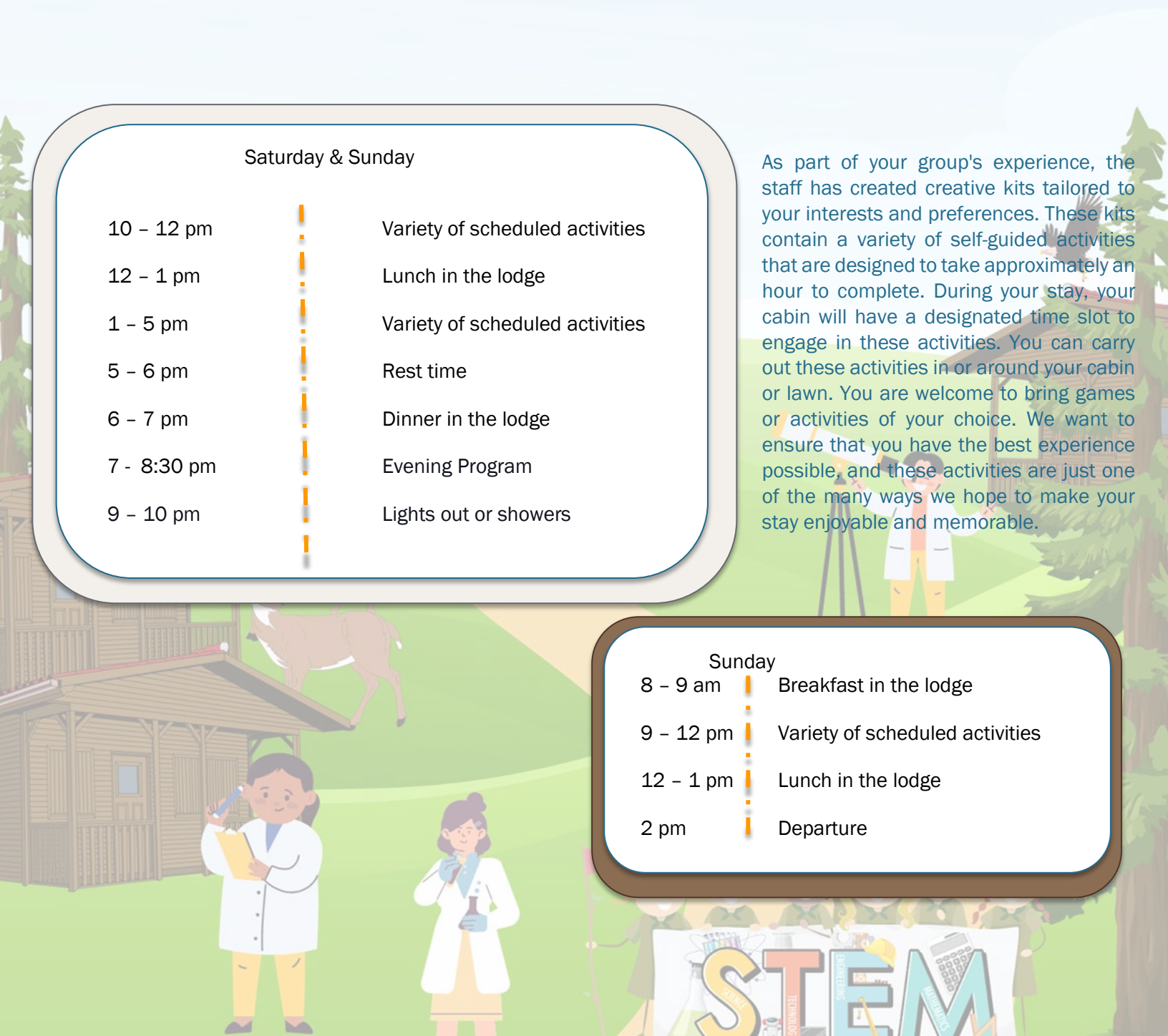
Saturday & Sunday

- 10 - 12 pm | Variety of scheduled activities
- 12 - 1 pm | Lunch in the lodge
- 1 - 5 pm | Variety of scheduled activities
- 5 - 6 pm | Rest time
- 6 - 7 pm | Dinner in the lodge
- 7 - 8:30 pm | Evening Program
- 9 - 10 pm | Lights out or showers

As part of your group's experience, the staff has created creative kits tailored to your interests and preferences. These kits contain a variety of self-guided activities that are designed to take approximately an hour to complete. During your stay, your cabin will have a designated time slot to engage in these activities. You can carry out these activities in or around your cabin or lawn. You are welcome to bring games or activities of your choice. We want to ensure that you have the best experience possible, and these activities are just one of the many ways we hope to make your stay enjoyable and memorable.


Sunday

- 8 - 9 am | Breakfast in the lodge
- 9 - 12 pm | Variety of scheduled activities
- 12 - 1 pm | Lunch in the lodge
- 2 pm | Departure





Important Information






PETS:

-  Animals are *not* allowed at camp. Please get in touch with us in advance if you are bringing a certified service animal.






EMERGENCY, MEDICAL, AND CONTACT:


-  Make sure to fill out the emergency contact information on the online registration form, especially if someone other than a parent or guardian will be dropping off or picking up your child from camp. This will help us contact the designated parent or guardian provided on the registration form in case of an emergency.
-  Our on-site health center is available for any medical needs, and the nearest hospital is located five miles away in downtown Portola. Campers cannot keep medication in their lodging area except for EpiPens and inhalers. The Camp Health Center staff will collect any medication at check-in, and all medication must be in their original container with clear instructions. Expired medications will not be administered. Over-the-counter medications are available at the Health Center, and bedwetting is treated with confidentiality.

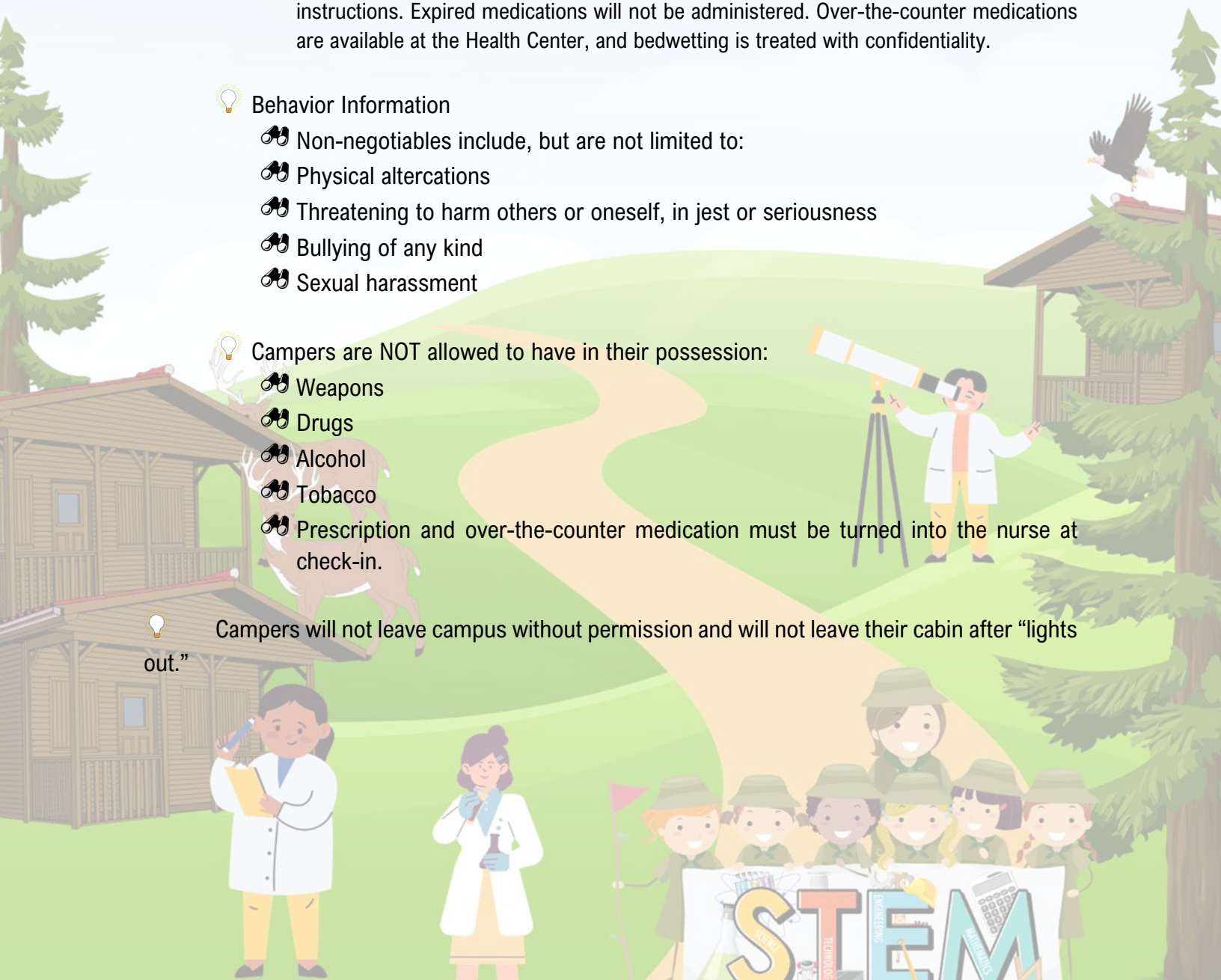
Behavior Information

-  Non-negotiables include, but are not limited to:
-  Physical altercations
-  Threatening to harm others or oneself, in jest or seriousness
-  Bullying of any kind
-  Sexual harassment

Campers are NOT allowed to have in their possession:

-  Weapons
-  Drugs
-  Alcohol
-  Tobacco
-  Prescription and over-the-counter medication must be turned into the nurse at check-in.

 Campers will not leave campus without permission and will not leave their cabin after “lights out.”



Directions to Camp

Physical Address:

Sierra Nevada Journeys Outdoor Education Camp
5900 Grizzly Road
Portola, CA 96122

Directions from Reno (1 hour) and Carson City (2 hours):

- 🌲 Take Highway 395 north toward Susanville.
- 🌲 Exit at Hallelujah Junction for Highway 70 West toward Quincy (left turn)
- 🌲 Turn right (north) onto Grizzly Road (21 miles from the intersection of Highway 395 and Highway 70)
- 🌲 The Sierra Nevada Journeys Outdoor Education Camp entrance is the first road on the left, directly after the mailboxes.

Directions from Sacramento (roughly 2 hours):

- 🌲 Take Interstate 80 east towards Truckee/Reno
- 🌲 Just past Truckee, take the Highway 89 north exit toward Sierraville (follow signage through traffic circles)
- 🌲 Follow Highway 89 to Sattley
- 🌲 Turn right onto Westside Road/County Road A23 toward Portola
- 🌲 Stay on Westside Road/A23 until it ends at Highway 70
- 🌲 Turn left onto Highway 70 toward Portola
- 🌲 Turn right (north) onto Grizzly Road
- 🌲 The Sierra Nevada Journeys Outdoor Education Camp entrance is the first road on the left, directly after the mailboxes.

Directions from Chico (roughly 2 hours):

- 🌲 Take Highway 99 south.
- 🌲 Turn left onto Highway 149
- 🌲 Turn left onto Highway 70
- 🌲 Turn left (north) onto Grizzly Road (about 4 miles past town)
- 🌲 The Sierra Nevada Journeys Outdoor Education Camp entrance is the first road on the left, directly after the mailboxes.

Directions from Susanville (roughly 1 ½ hours):

- 🌲 Take Highway 395 south.
- 🌲 Exit at Hallelujah Junction for Highway 70 West toward Quincy (right turn)
- 🌲 Turn right (north) onto Grizzly Road (21 miles from the intersection of Highway 395 and Highway 70). The Sierra Nevada Journeys Outdoor Education Camp entrance is the first road directly on the left after the mailboxes.

